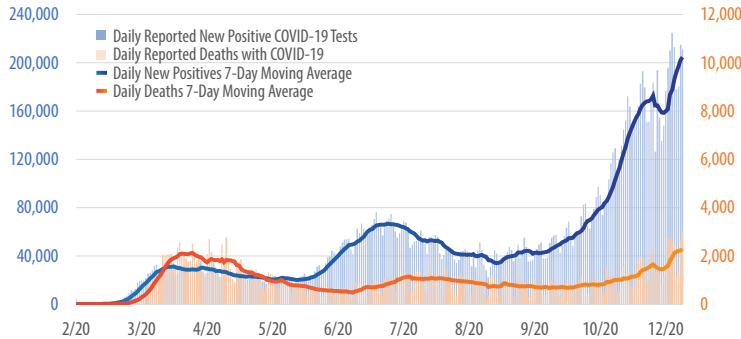


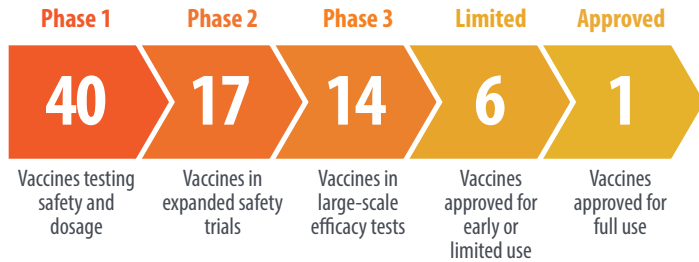
First Trust COVID-19 TRACKER

Daily Reported New Positive COVID-19 Tests vs. Daily Reported Deaths with COVID-19 in the U.S.

February 26, 2020 - December 9, 2020



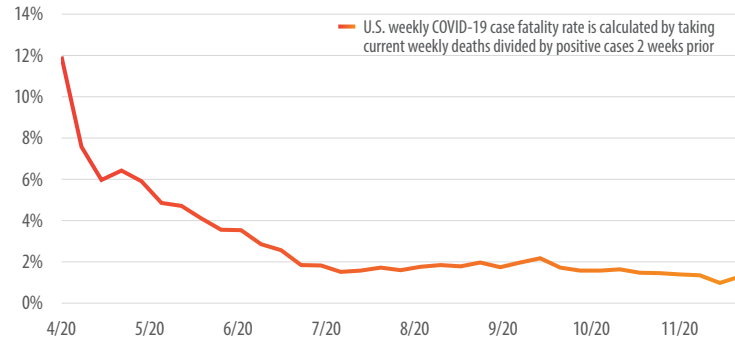
Source: Covidtracking.com



Source: The New York Times. Data as of December 10, 2020.

U.S. Weekly COVID-19 Case Fatality Rate

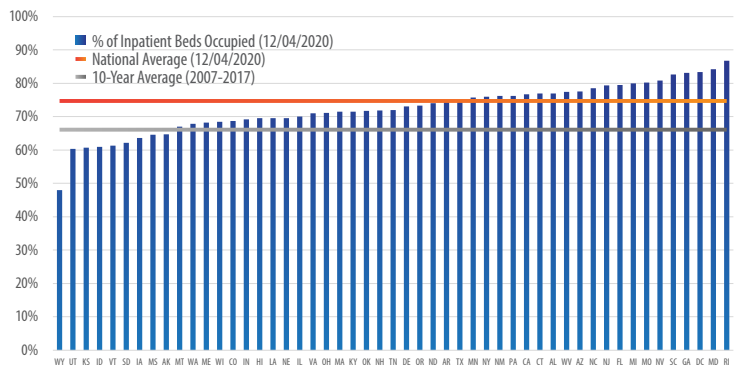
April 12, 2020 - December 6, 2020



Source: Covidtracking.com

Percentage of Inpatient Hospital Beds Occupied

As of December 4, 2020



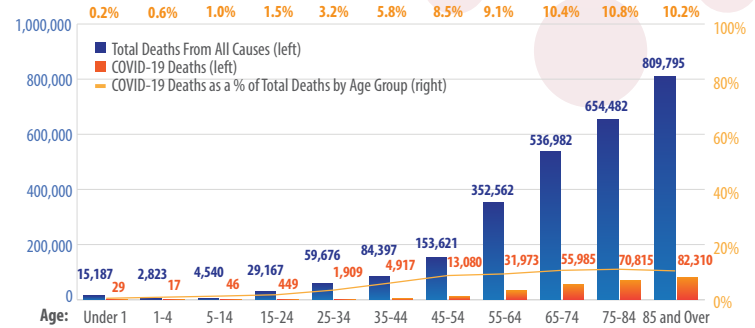
Sources: American Hospital Association, U.S. Department of Health & Human Services, HealthData.gov

¹travelweekly.com (November 25, 2020); ²iata.org (October 8, 2020)

The number of cities connected directly by air service was 36% below pre-pandemic levels at the end of October. New York has lost 66% of connectivity, dropping from the world's third most connected city to outside the top 10. Los Angeles also fell outside the top 10. London dropped from the first to eighth. Meanwhile, China now has the four most connected cities: Shanghai, Beijing, Guangzhou and Chengdu.¹

Total Deaths and COVID-19 Deaths in the U.S. by Age Group

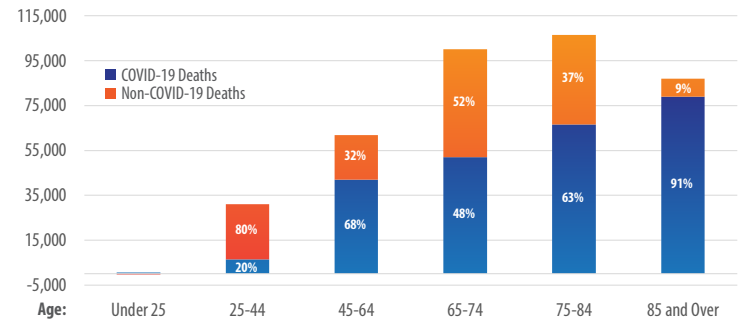
February 1, 2020 - December 5, 2020



Sources: CDC.gov, National Center for Health Statistics

Total Excess Deaths By Age Group

January 26, 2020 - November 28, 2020



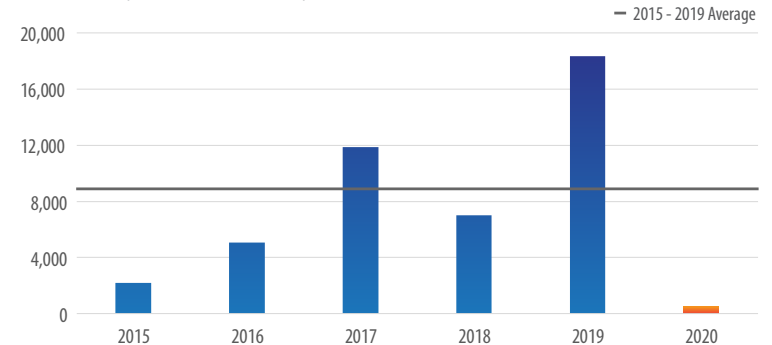
Source: CDC.gov. Excess deaths for each age group are calculated by subtracting the expected number of deaths (based on the 2015-19 average of the first 43 weeks of each year) from the total deaths that have occurred over the same time period in 2020.



The International Air Transport Association (IATA) demonstrated the low incidence of inflight COVID-19 transmission with an updated tally of published cases. **Since the start of 2020 through September, there have been 44 cases of COVID-19 reported in which transmission is thought to have been associated with a flight journey** (inclusive of confirmed, probable and potential cases). **Over the same period some 1.2 billion passengers have traveled.**²

Clinical and Public Health Lab Confirmed Cases of Influenza

Weeks 40-48*, 2015 - November 28, 2020



Source: gis.cdc.gov

*The measure starts at week 40 because this is considered the beginning of the annual flu season